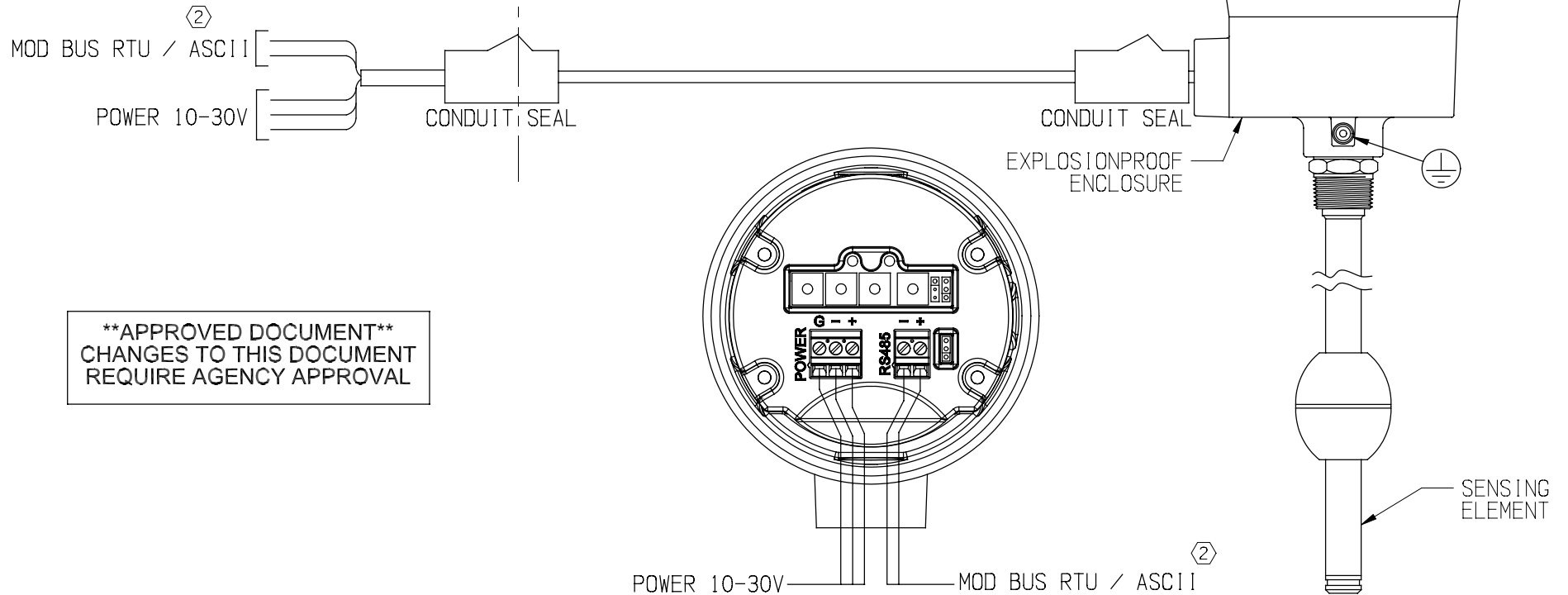


NON HAZARDOUS AREA

HAZARDOUS AREA  
XP CL I, DIV 1, GRP A,B,C,D

3 LOOSEN SET SCREW TO REMOVE COVER



**\*\*APPROVED DOCUMENT\*\***  
CHANGES TO THIS DOCUMENT  
REQUIRE AGENCY APPROVAL

- NOTES:
1. INSTALLATIONS SHALL COMPLY WITH THE LATEST EDITION OF THE NATIONAL ELECTRICAL CODE (ANSI/NFPA 70) AND THE CANADIAN ELECTRICAL CODE (CEC).
  2. UNUSED OPENINGS MUST BE PROPERLY SEALED TO MAINTAIN ENCLOSURE ENVIRONMENTAL AND/OR HAZARDOUS LOCATION RATINGS.
  3. BEFORE REMOVING THE EXPLOSIONPROOF HOUSING COVER IN A POTENTIALLY HAZARDOUS AREA, MAKE CERTAIN THAT THE AREA IS SAFE. WHEN SERVICING/CALIBRATION IS COMPLETE, THE COVER MUST BE REPLACED. SECURE SET SCREW AFTER REPLACING COVER.
  4. CONDUIT SEAL AT ENCLOSURE ENTRANCE.

CERTIFIED	by _____					COPYRIGHT 2008
PO #	_____					AMETEK DREXELBROOK
ENG	_____					SCALE NONE
USER	_____					UNLESS OTHERWISE STATED ALL DIMENSIONS IN INCHES (MM)
		2	8-08-110	THP	8-22-08	DR. JJS 8-19-08
		1	10-06-104	SGA	10-25-06	CK. CDW
DE #	_____	ISS.	EDO/DSR NO.	APP'D	DATE	

**AMETEK®**  
**DREXELBROOK**

205 KEITH VALLEY RD  
HORSHAM, PA 19044-9986

215-674-1234  
FAX 215-674-2731

2 DM231  
EXPLOSIONPROOF  
FM CONTROL DRAWING

420-0004-343-CD

SHT. 1 OF 1  
ISS. 2

No. 420-0004-343-CD  
SHT 1 OF 1