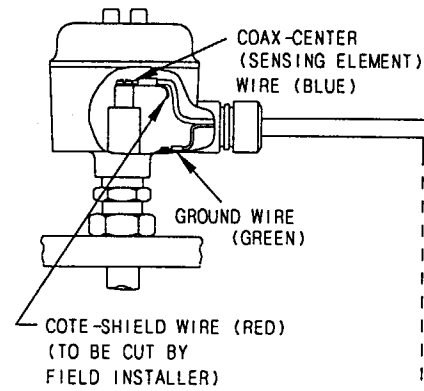
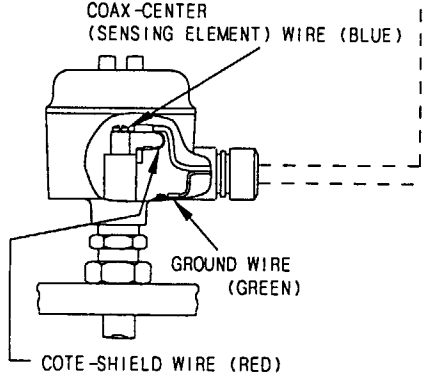


REMOTE MOUNTING

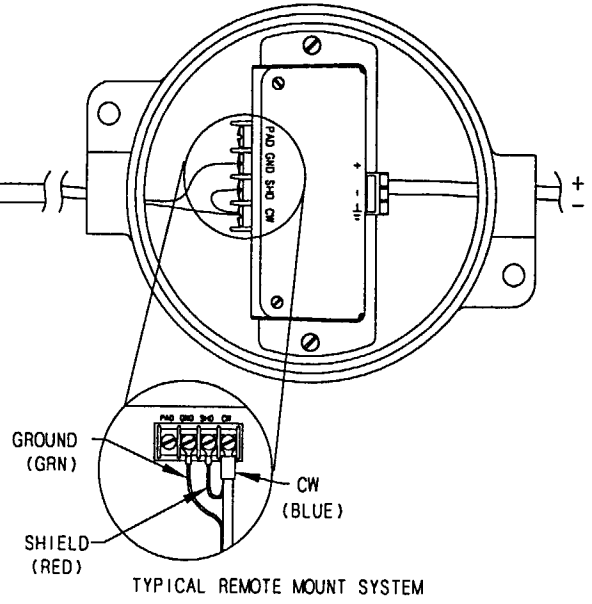
TWO-TERMINAL PROBE



THREE-TERMINAL PROBE



REMOTE MOUNT - (508-45-7XX SYSTEMS) UNIT

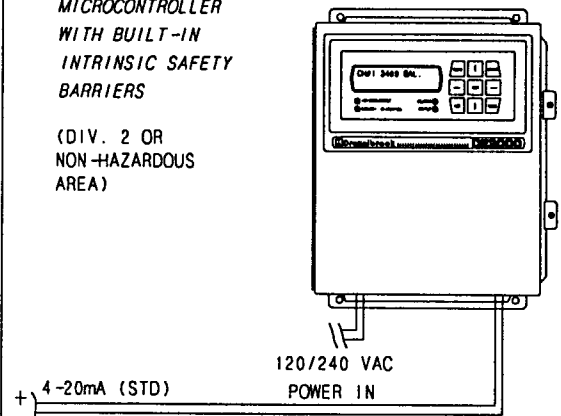


- NOTES:
- 1 ALL DEVICES MUST BE WIRED IN SERIES. VOLTAGE DRIVEN DEVICES REQUIRE A SERIES VOLTAGE DROPPING RESISTOR.
  - 2 SIGNAL TERMINALS + & - CAN OPERATE WITH MINIMUM OF 12.0 VDC WITH 20ma FLOWING.
  - 3 IF THE FIELD WIRING IS TO BE IN HAZARDOUS AREAS, THEN SUITABLE SAFETY BARRIERS ARE REQUIRED BETWEEN THE CONTROL ROOM AND THE FIELD TO PROVIDE FOR INTRINSICALLY SAFE FIELD WIRING.

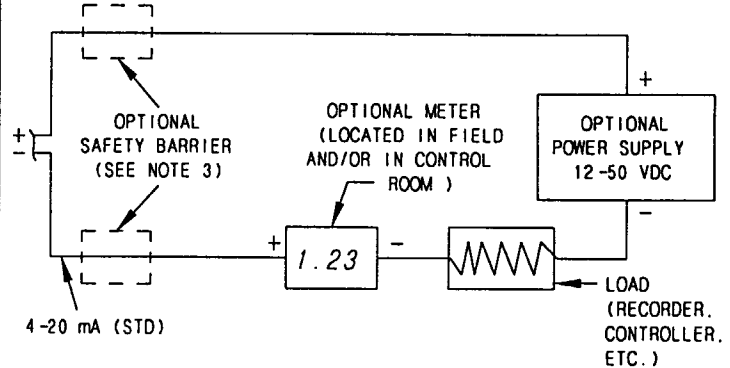
HAZARDOUS AREA      NONHAZARDOUS AREA

a. DE2000 SERIES MICROCONTROLLER WITH BUILT-IN INTRINSIC SAFETY BARRIERS

(DIV. 2 OR NON-HAZARDOUS AREA)



b. INDIVIDUAL LOOP COMPONENT WIRING



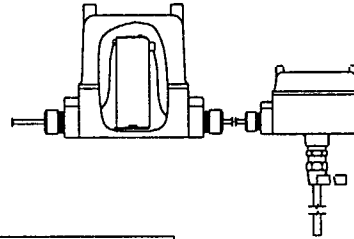
CERTIFIED	by _____	1	4-96-251	ELL	5-20-96	COPYRIGHT	1997
PO #	_____	D	1-96-45	ELS	3-21-96	DREXELBROOK ENG CO.	
ENG	_____	C	12-92-231	MAM	3-2-93	SCALE	NONE
USER	_____	B	10-10-91	MAM	10-29-91	UNLESS OTHERWISE STATED ALL DIMENSIONS IN INCHES (MM)	
	_____	2	4-97-243	DK	4/24/97	DR.	AJK
DE #	_____	ISS.	EDO/DSR NO.	APP'D	DATE	CK.	AWL

WIRING DIAGRAM FOR 508-(45.46.47.49) REMOTE TWO-WIRE LEVEL SYSTEMS

418-2-48-CD

SHT. 1	ISS
OF 4	2

REMOTE MOUNT SYSTEMS



508-45-7XX SYSTEMS:

TYPICAL SYSTEMS (CONDUCTING) (SEE SHT 3 & 4)							
SYSTEM NO.	PROBE NO.	A (NPT)	B (OD) (MAT'L)	C	D (OD) (MAT'L)	E	FIG.
508-45-70N	700-1-24	1.5"	3/8" (9.5) TEFLON	---	1.66" (42.2) C.S.	---	3
508-45-701	700-205-78	1"	5/16" (7.9) *X*	---	7/8" (22.2) 304 SS	1/2"-20	6
508-45-702	700-2-27	3/4"	.54" (13.7) TEFLON	---	---	---	1
508-45-705	700-2-37	3/4"	.54" (13.7) *X*	---	---	---	1
508-45-706	700-2-57	1"	.84" (21.3) *X*	---	---	---	1
508-45-707	700-2-24	3/4"	3/4" (19.1) TEFLON	---	---	---	2
508-45-709	700-1-22	3/4"	3/8" (9.5) TEFLON	---	---	---	1
508-45-713	700-5-18	3/4"	5/16" (7.9) *X*	2 3/8" (60.3)	7/8" (22.2) 316 SST	3/4"-10	5A,B,C,D
508-45-716	700-5-48	3/4"	5/16" (7.9) PFA	2 3/8" (60.3)	7/8" (22.2) 316 SST	3/4"-10	5A,B,C,D
508-45-717	700-1-344	3/4"	3/8" (9.5) TEFLON	---	---	---	1
508-45-718	700-2-321	FLANGE ONLY	3/4" (19.1) FEP	---	---	---	2
508-45-725	700-5-54	3/4"	.093" (2.4) PFA	1 1/2" (38.1)	3/4" (19.1) TEFLON	1/2"-20	4
508-45-730	700-1-62	3/8"	---	---	---	---	7
508-45-744	700-1-344	FLANGE ONLY	.093" (2.4) PFA	1 1/2" (38.1)	3/4" (19.1) TEFLON	1/2"-20	4

508-46-7XX SYSTEMS:

TYPICAL SYSTEMS (INTERFACE) (SEE SHT 3 & 4)							
SYSTEM NO.	PROBE NO.	A (NPT)	B (OD) (MAT'L)	C	D (OD) (MAT'L)	E	FIG.
508-46-70N	700-205-78	1"	5/16" (7.9) *X*	---	7/8" (22.2) 304 SST	1/2"-20	6
508-46-702	700-2-27	3/4"	.54" (13.7) TEFLON	---	---	---	1
508-46-704	700-2-37	3/4"	.54" (13.7) *X*	---	---	---	1
508-46-706	700-2-57	1"	.84" (21.3) *X*	---	---	---	1
508-46-70N	700-2-24	3/4"	3/4" (19.1) TEFLON	---	---	---	2
508-46-70N	700-5-18	3/4"	5/16" (7.9) *X*	2 3/8" (60.3)	7/8" (22.2) 316 SST	3/4"-10	5A,B,C,D

508-47-7XX SYSTEMS:

TYPICAL SYSTEMS (INSULATING) (SEE SHT 3 & 4)							
SYSTEM NO.	PROBE NO.	A (NPT)	B (OD) (MAT'L)	C	D (OD) (MAT'L)	E	FIG.
508-47-714	700-205-78	1"	5/16" (7.9) *X*	---	7/8" (22.2) 304 SST	1/2"-20	6
508-47-725	700-5-54	3/4"	.093" (2.4) TEFLON	1 1/2" (38.1)	3/4" (19.1) TEFLON	1/2"-20	4
508-47-70N	700-1-22	3/4"	3/8" (9.5) TEFLON	---	---	---	1
508-47-70N	700-5-18	3/4"	5/16" (7.9) *X*	2 3/8" (60.3)	7/8" (22.2) 316 SST	3/4"-10	5A,B,C,D
508-47-706	700-1-24	1.5"	3/8" (9.5) TEFLON	---	1.66" (42.2) C.S.	---	3

508-49-7XX SYSTEMS:

TYPICAL SYSTEMS (GRANULAR) (SEE SHT 3 & 4)							
SYSTEM NO.	PROBE NO.	A (NPT)	B (OD) (MAT'L)	C	D (OD) (MAT'L)	E	FIG.
508-49-701	700-205-78	1"	5/16" (7.9) *X*	---	7/8" (22.2) 304 SST	1/2"-20	6
508-49-719	700-5-18	3/4"	5/16" (7.9) *X*	2 3/8" (60.3)	7/8" (22.2) 316 SST	3/4"-10	5C,D
508-49-720	700-5-18	3/4"	5/16" (7.9) *X*	2 3/8" (60.3)	7/8" (22.2) 316 SST	3/4"-10	5A,B
508-49-723	700-5-18	3/4"	5/16" (7.9) *X*	2 3/8" (60.3)	7/8" (22.2) 316 SST	3/4"-10	5A,B

CERTIFIED	by _____	1	4-96-251	ELL	5-20-96	COPYRIGHT	1996
PO #	_____	D	1-96-45	ELS	3-21-96	DREXELBROOK ENG CO.	
ENG	_____	C	12-92-231	MAM	3-2-93	SCALE	NONE
USER	_____	B	10-10-91	MAM	10-29-91	UNLESS OTHERWISE STATED ALL DIMENSIONS IN INCHES (MM)	
_____	_____	2	4-97-243	DR. CDW	4/2/16	DR.	CDW
DE #	_____	ISS.	EDO/DSR NO.	APP'D	DATE	CK.	WLL

**DREXELBROOK**  
Engineering Company

205 KEITH VALLEY RD  
HORSHAM, PA 19044-9986

215-674-1234  
FAX 215-674-2731

508-4X-7XX  
SYSTEM SPECIFICATIONS

418-2-48-CD

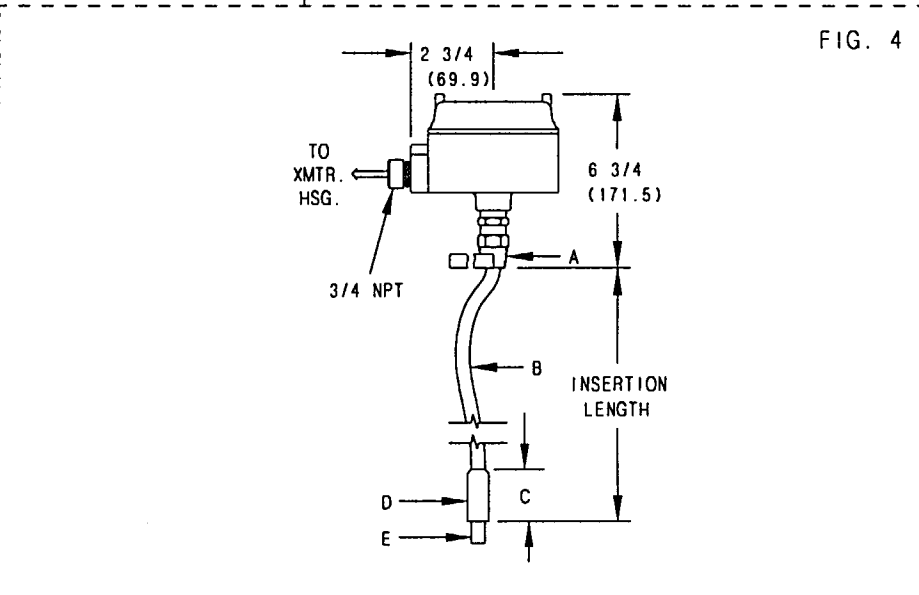
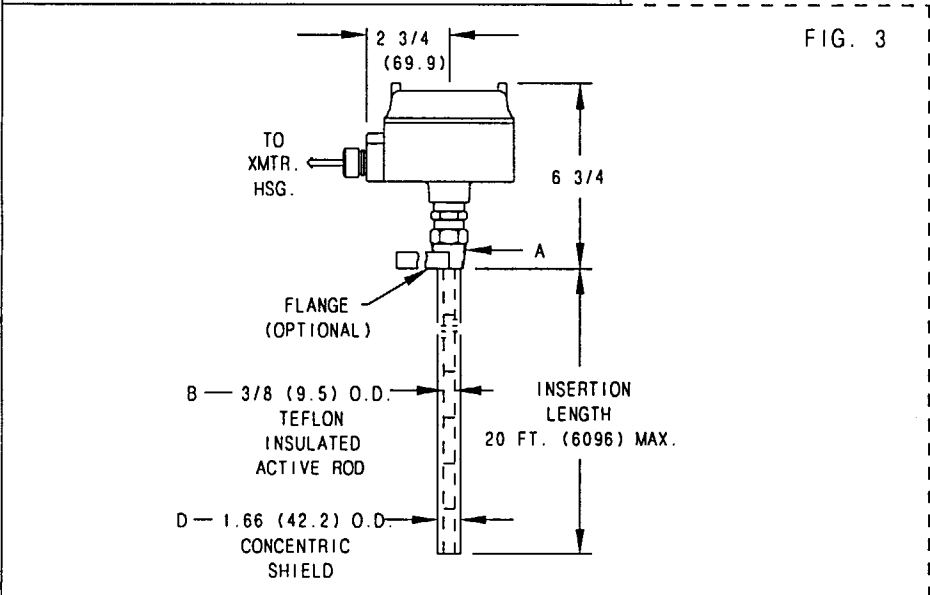
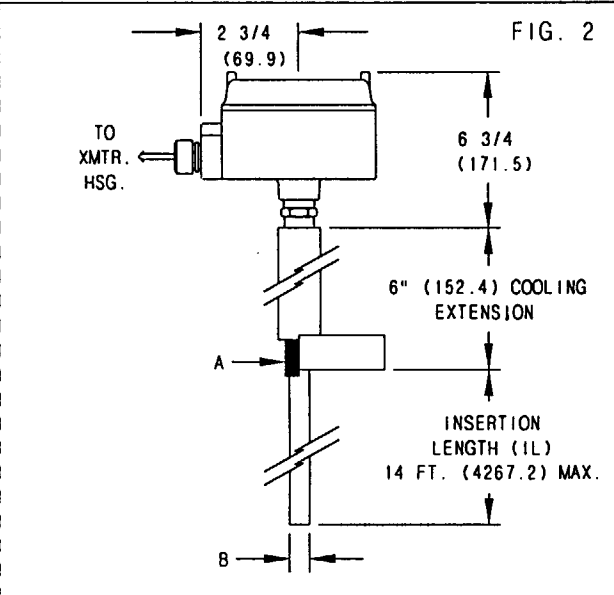
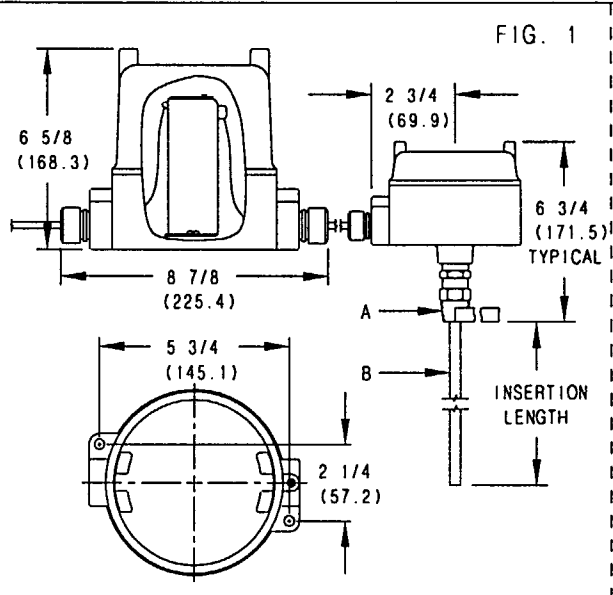
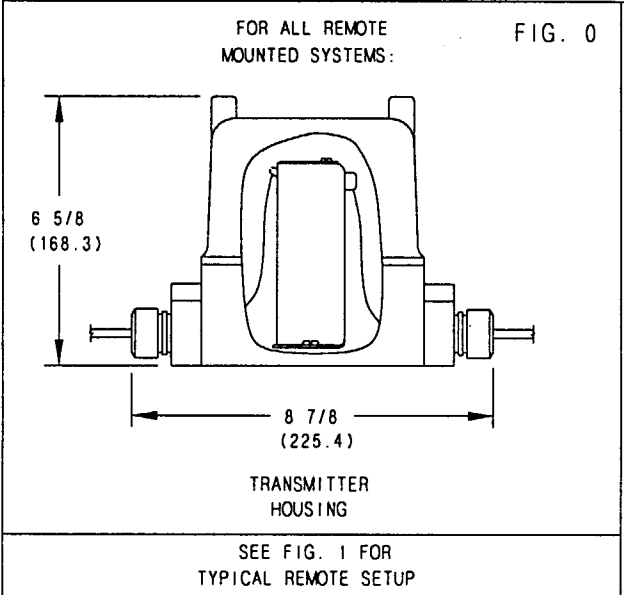
SHT. 2 OF 4  
ISS OF 4 2

440-115-104 (2)

5

418-2-48-CD

SHT. 2 OF 4



CERTIFIED	by	1	4-96-251	ELL	5-20-96	COPYRIGHT	1997
PO #		D	1-96-93	ELS	3-21-96	DREXELBROOK ENG. CO.	
ENG		C	12-92-231	MAM	3-2-93	SCALE	NONE
USER		B	10-10-91	MAM	10-29-91	UNLESS OTHERWISE STATED	ALL DIMENSIONS IN INCHES (MM)
		2	4-97-243	DR.	AJK	DR.	AJK
DE #		ISS.	EDO/OSR NO.	APP'D	DATE	CK.	W/L

**DREXELBROOK**  
Engineering Company

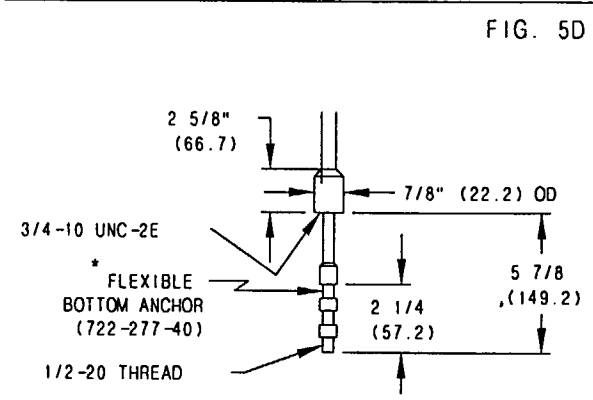
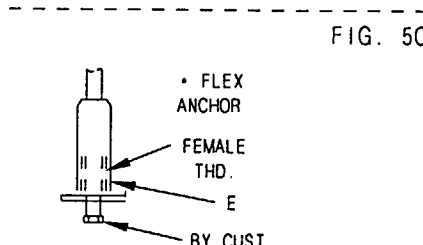
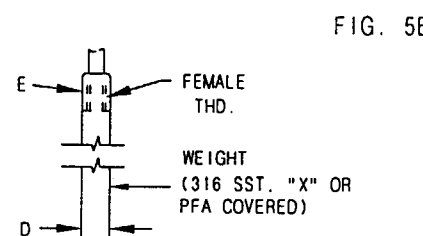
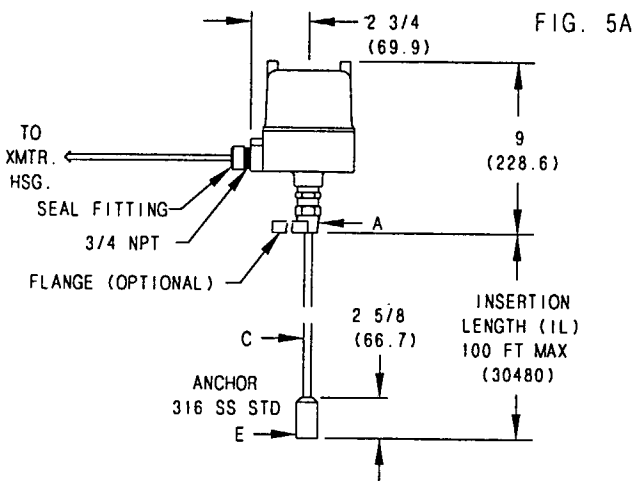
205 KEITH VALLEY RD  
HORSHAM, PA 19044-9886

215-874-1234  
FAX 215-874-2731

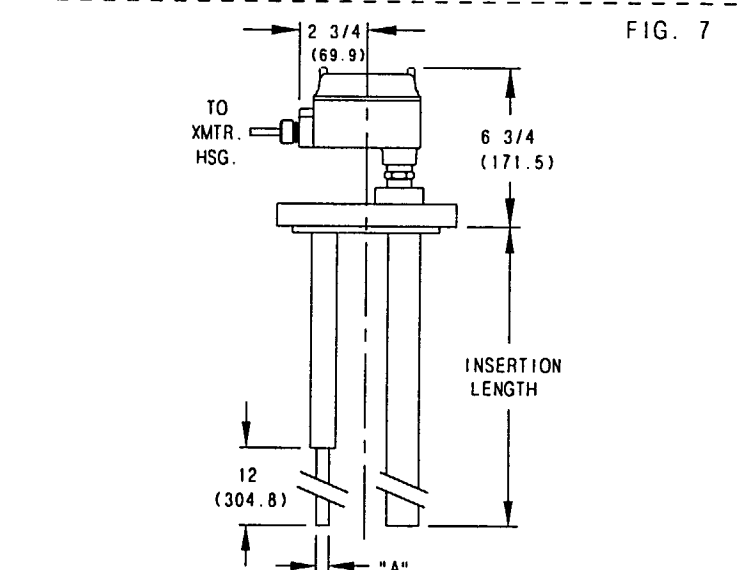
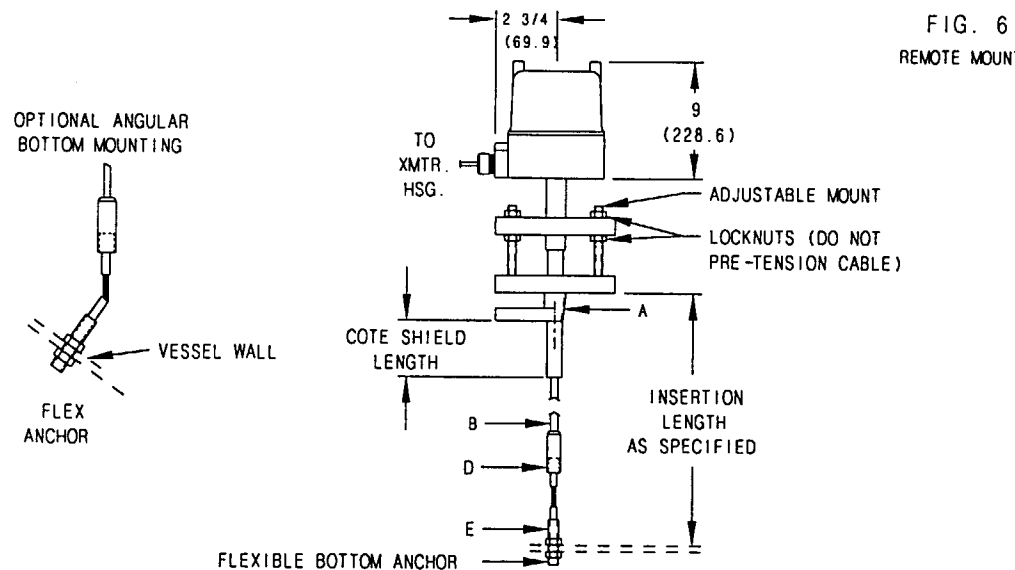
MOUNTING DIAGRAM  
FOR 508-(45.46.47.49)  
REMOTE TWO-WIRE  
LEVEL SYSTEMS

418-2-48-CD

SHT. 3 OF 4  
ISS 2



\* FIG. 5A,B,C,D ARE AVAILABLE STANDARD TERMINATIONS PER SENSING ELEMENT MODEL 700-5-18.



CERTIFIED	by _____	1	4-96-251	ELL	5-20-96	COPYRIGHT	1997
PO #	_____	D	1-96-45	ELS	3-21-96	DREXELBROOK	ENG CO.
ENG	_____	C	12-92-231	MAM	3-2-93	SCALE	NONE
USER	_____	B	10-10-91	MAM	10-29-91	UNLESS OTHERWISE STATED ALL DIMENSIONS IN INCHES (MM)	
	_____	2	4-97-243	DR.	AJK		
DE #	_____	ISS.	EDO/DSR NO.	APP'D	DATE	CK.	_____

**DREXELBROOK**  
Engineering Company

205 KEITH VALLEY RD  
HORSHAM, PA 19044-9986

215-674-1234  
FAX 215-674-2731

MOUNTING DIAGRAM  
FOR 508-(45.46.47.49)  
REMOTE TWO-WIRE  
LEVEL SYSTEMS

418-2-48-CD

SHT. 4 OF 4  
ISS 2